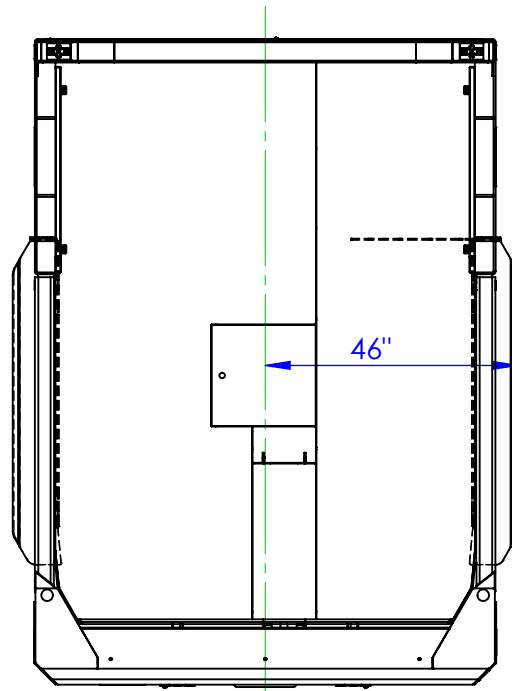
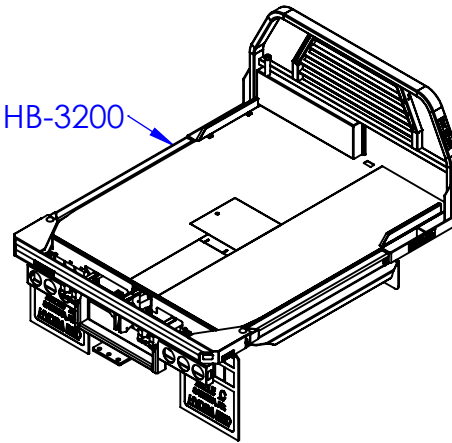


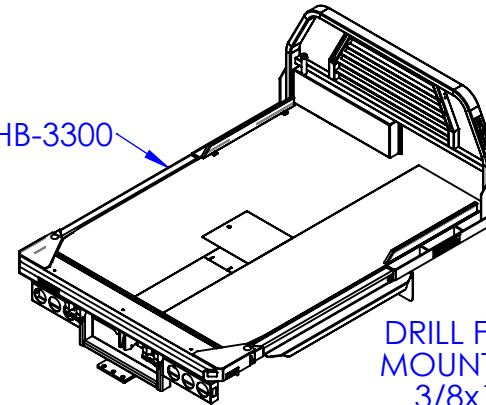
REV.	REVISIONS	DESCRIPTION	DATE	APPROVED
B		UPDATED TO DS & PS FLARES	10/8/2013	



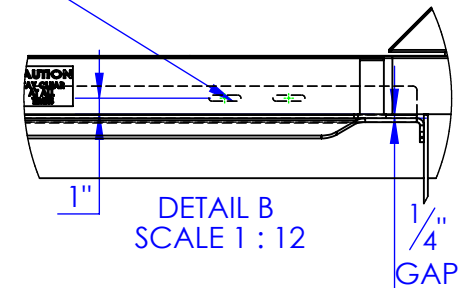
HB-3200



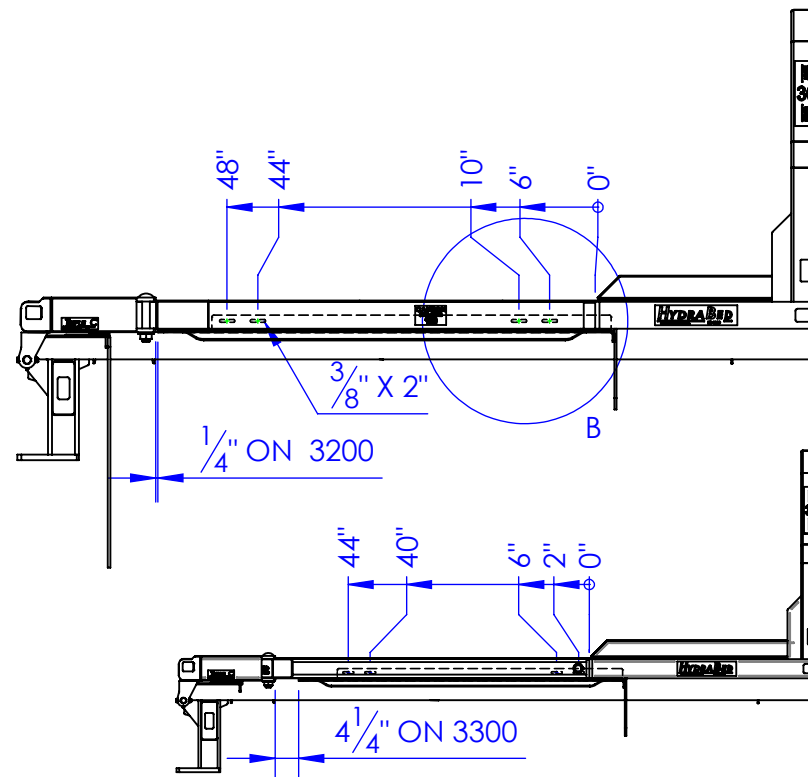
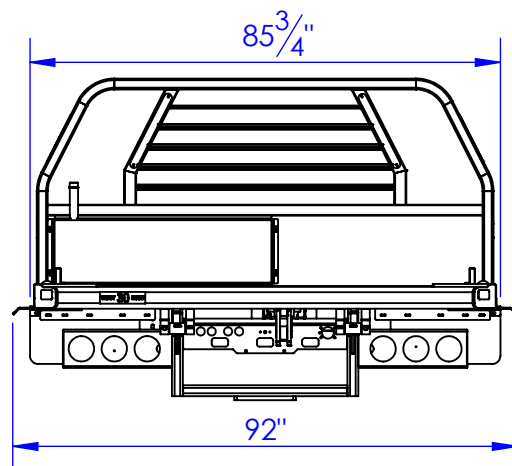
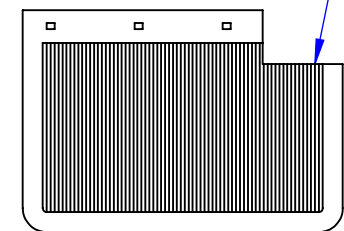
HB-3300



DRILL FOUR 3/8" HOLES & MOUNT FLARE WITH FOUR 3/8x1 BOLTS PER SIDE



NOTCH FRONT MUDFLAP TO MATCH & DRILL NEW HOLES



PROPRIETARY AND CONFIDENTIAL
THE INFORMATION CONTAINED IN THIS DRAWING IS THE SOLE PROPERTY OF TRIPLE C INC. ANY REPRODUCTION IN PART OR AS A WHOLE WITHOUT THE WRITTEN PERMISSION OF TRIPLE C INC. IS PROHIBITED.

DIMENSIONS ARE IN INCHES
TOLERANCES:
FRACTIONAL $\pm 1/16$
ANGULAR: MACH ± 1 BEND \pm
TWO PLACE DECIMAL ± 0.10
THREE PLACE DECIMAL ± 0.005

MATERIAL ---
DO NOT SCALE DRAWING

NAME	DATE
DRAWN HEATH	11/21/2013
PART #	
ASM #	OP-FL-392

COMMENTS:
HB3200 & HB3300 FENDER FLARE 92"

P.O. BOX 248,
SABETHA, KS 66534

TRIPLE C
INC.

SIZE A	DWG. NO. 90-0210 B	REV. B
SCALE: 1:35	WEIGHT: ---	SHEET 1 OF 1